



2025 | APRIL - JUNE
[ISSUE 2]



QUARTERLY NEWSLETTER





WORK BEGINS ON \$70M TAMAVUA-I-WAI BRIDGE PROJECT



On May 9th, the official groundbreaking ceremony for the Tamavua-i-Wai Bridge reconstruction project was held, led by the Minister for Public Works, Transport, and Meteorological Services, Hon. Ro Filipe Tuisawau. The \$70 million project, funded by the Government of Japan, aims to significantly enhance connectivity and strengthen resilience along one of Fiji’s busiest transport corridors.

Hon. Minister Tuisawau emphasized the importance of the bridge as a vital access point to Suva City and essential services. **“For this project I am very grateful to the Japanese government for their ongoing and continued support,”** he said.

Japanese Ambassador to Fiji, H.E. Michii Rokuichiro, also highlighted the strategic importance of the bridge, noting it as one of the most significant infrastructure projects, and is happy to work with the Fiji Roads Authority to ensure its completion. The Government of Japan is delighted to be able to support this vital infrastructure initiative through our grant aid scheme, contributing approximately 70 million FJD.



“It is one of the most critical infrastructure investments in Fiji today—and we are pleased that the work begins now,” said Mr. Rokuichiro. **“The new bridge, when completed, will stand as the first earthquake-resilient structure of its kind in Fiji. The bridge will not only complement the existing two-lane bridge but also prepare the way for a future four-lane Suva–Lami motorway. In this way, the bridge embodies both immediate value and long-term vision, in line with Fiji’s National Development Plan 2025–2029 and Vision 2050,”** he added.

Once completed, the bridge will not only improve travel efficiency but also enhance safety and provide a more resilient infrastructure. The new bridge is expected to be completed within two years and eight months.



CONSTRUCTION OF NEW SUSPENSION BRIDGE IN BUA BEGINS

After a decade of waiting, relief is finally in sight for the people of the chiefly village of Bua Lomanikoro, as construction begins for a new suspension bridge. The \$1.3 million project will directly benefit over 800 residents from Bua Lomanikoro, Tiliva, and Dalomo villages—providing safe and reliable access for the communities after years of hardship. The bridge that was destroyed in 2016 was the means of easy access for students, farmers, families, and all neighboring communities.

At the official groundbreaking ceremony on 13th June, Minister for Public Works, Meteorological Services, and Transport Hon. Ro Filipe Tuisawau congratulated the villagers for a new bridge that will change lives for the villagers once completed. **“Resilient and improved infrastructure is key to enhancing the livelihoods of rural communities. This project is more than just steel and concrete—it is a bridge of hope, progress, and connection for the communities that have long waited for a safe and reliable way to cross this river,”** he said.

Turaga-Ni-Koro, Maciu Mailekutu, thanked the government for listening to the plea of the villagers for a new bridge.

“I am so thankful that this is finally happening. We have waited for 10 years, and this has been long. We are happy that our request was finally taken into consideration to build a new bridge,” he said. **“We look forward to the new suspension bridge, as it will bring so**

much relief for the villagers, students, and farmers,” he added. The village is home to school students who cross the river daily to attend classes, women who operate canteens, and farmers with plantations on the other side—making the bridge essential for their daily livelihoods. Titalia Tukubu, a resident of Bua Lomanikoro, says she is overjoyed that a new bridge is finally being built, describing it as a much-needed



development for her family and community. **“My husband is a farmer with a plantation on the other side of the river, and I run a small canteen. We both have to cross the river to earn a living, so the new bridge will make our lives so much easier,”** said Ms. Tukubu. **“Whenever I need to restock my canteen, I have to wait for a boat to cross the river. Sometimes the wait is long, and when it rains, it becomes even more difficult.”** She also highlighted the challenges faced by students who attend

school across the river. **“They usually travel by RSL, which takes longer. If the RSL is late or unavailable, they have to rely on boats to get across. When services are disrupted due to bad weather, students often miss school. This bridge will be a huge help for them too,”** she added.

Ms. Duinisi Tabakei from the nearby village of Nawailevu, who attended the groundbreaking ceremony, shared her excitement about the new bridge and what it will mean for the community. **“I am really happy that the bridge is finally being built. Once it’s completed, travelling across will be so much easier for all of us,”** she said. **“Everyone is pleased because we have waited a long time for this. Whenever we have community events and need to travel across the river, it’s always a challenge—but the new bridge will change that.”** **“We usually travel by bus, which takes longer. Having a bridge will make the journey quicker and more convenient,”** she added.

The Hon. Minister thanked the local communities for their patience and resilience over the years and acknowledged the efforts of the Fiji Roads Authority and Public Works for their continued dedication in constructing the bridge. The first phase of the project, which involves constructing bridge towers on both sides of the river, is expected to be completed by July 2025. The second phase is scheduled to begin in August and is projected to be completed by December.



UPGRADED SUVA BUS STAND A WELCOME RELIEF FOR COMMUTERS

The Fiji Roads Authority (FRA) has successfully completed the rehabilitation works at the Suva Bus Stand, marking a major milestone in improving one of the country’s busiest and most essential public transport hubs. The completed project has significantly enhanced the overall functionality, safety, and durability of the bus stand, which serves thousands of commuters.

As a central point for public transportation, the Suva bus stand’s upgrade ensures a more comfortable, accessible, and resilient environment for passengers, transport operators, and the general public. Daily commuter Mr. Sairusi Serli of Quaia, Lami, expressed his satisfaction with the completed upgrades at the Suva Bus Stand, noting the much-needed improvements.

“It’s really good to see the changes made to the Suva Bus Stand. These improvements were long overdue,” he said. “I am very happy with the new tar-seal works and the clearly marked lanes. As someone who uses the bus every day, I think it is safer, more organized, and definitely a better experience for all of us who commute daily,” he added.

The rehabilitation works included comprehensive infrastructure upgrades such as drainage improvements, culvert and gully pit installations, dish channel and manhole cover replacements, pavement strengthening by cement stabilization, and new asphalt concrete surfacing. These improvements are designed to prevent flooding, improve surface durability, and promote efficient traffic flow within the bus stand. Speaking with the FRA, bus driver Mr. Nilesh Prasad shared his appreciation for the upgraded Suva Bus Stand

and the quality of work completed. “I’m extremely happy with the improvements. As a driver, the previous road conditions were quite challenging—especially during the rainy season. The potholes made driving difficult and even caused damage to the bus at times,” he said.

“The new surface has made a huge difference, and the clearly marked bays have really helped with traffic flow. It’s now much easier for us drivers to know exactly where to wait when the bays are full, which helps reduce delays,” he added.

The FRA extends its appreciation to the public for their patience and cooperation during the construction period and encourages continued civic pride in maintaining the upgraded facility.

COMMUNITY FEEDBACK



Ms. Tima Waqabaca
Daily Commuter -
Vunidawa, Naitasiri

“The new improved bus stand is a welcome sight for us bus users. I appreciate the work done to give us a safe and more accessible bus stand. I urge the public to take care of the new facility and also to dispose of rubbish wisely. We can see people throwing rubbish everywhere, and we need to stop this and appreciate the new bus stand.”



Ms. Losevati Druguta
Year 12 Student

“The look of the bus stand is very good, and the zebra crossings make it safer to use. Previously, during the rainy season, the wastage from the catch pits would overflow—the new drains and catch pits are a relief now. Also, to make a difference as good citizens, we need to dispose of rubbish wisely to avoid blocked drains.”



Mr. Ashneel Chand
Tacirua Transport
Checker

“I have been working as a bus checker for the past three years, and I truly welcome the improvements made to the Suva Bus Stand. “The clear lane markings are very helpful for drivers and make movement around the area safer and more organized for daily users. The installation of proper lighting has also made a big difference at night—it helps reduce the risk of pickpocketing and makes the space feel much safer overall.”



HOUSEHOLD WASTE IN DRAINAGE SYSTEMS A GROWING CONCERN

The Fiji Roads Authority (FRA) is raising concerns over the recurring issue of improper waste disposal and careless dumping of rubbish into drains that continues to affect road infrastructure. Despite continuous efforts by FRA teams to clean and clear drains through high-pressure jetting and other maintenance works, the problem persists.

During recent heavy downpours in past weeks, two major incidents were recorded where drains were completely clogged with household waste, leading to significant damage to pavements following the rainfall. As a result, the team was deployed to clear the blocked drainage, retrieving large amounts of waste, including soft drink and beer cans, plastic

bottles, takeaway containers, general plastic items, and, quite shockingly, even a tricycle. This ongoing issue has not only contributed to blocked drainage systems but has also caused damage to road pavements and roads.

FRA urges the public to be more considerate by disposing of rubbish properly, adopting better waste disposal habits, and taking pride in keeping their communities clean to help prevent further damage and disruption. Maintaining clear drains is crucial for preventing flooding, protecting road infrastructure, and ensuring the safety of all road users. Working together is key to maintaining clean and functional roads and drains across Fiji.

IMPROVING ACCESS AND CONNECTIVITY FOR PEOPLE OF GAU



CONCERNS OVER VANDALISM TO BUS SHELTERS AND ROAD SIGNS



The Fiji Roads Authority (FRA) is urging the public to help protect public infrastructure following a rise in vandalism cases—including the damaging of road signs, graffiti on bus stops, and posting of unauthorized advertisements on bus shelters. FRA constructs bus shelters to provide safe and convenient spaces for commuters and public transport operators, especially during adverse weather. Unfortunately, many of these shelters have been defaced or damaged by acts of vandalism. Road signs are equally important in maintaining safe

and efficient traffic flow. When they are removed or damaged, it puts everyone at risk, compromising traffic safety. The FRA continues to receive reports of such damage, which not only endangers road users but also incurs significant costs for the rehabilitation and maintenance of affected infrastructure.

The FRA calls on all members of the public to take pride in and care for shared infrastructure, report any acts of vandalism to the relevant authorities, and act responsibly.

New road improvement works on Gau Island have benefited over 2,200 people across 22 villages and settlements, significantly enhancing accessibility and daily travel for residents. To support infrastructure development and improve connectivity, the FRA has undertaken essential upgrades to the island's road network.

This included the installation of new culverts along the Gau Circular Road to improve drainage and minimize flooding risks. Resheeting works were also carried out along the Navukailagi Village Access Road and key sections of the Gau Circular Road, particularly from Nawaikama Village to the airstrip.

These upgrades will provide a smoother, safer, and more durable surface—ensuring more reliable travel for school children, farmers, and the broader community.



THE NEW LOMALOMA JETTY BRINGS RELIEF TO PEOPLE OF VANUABALAVU

The opening of the Lomaloma Jetty has brought much-needed relief to the people of Vanuabalavu Island, serving as a strong testament to improved connectivity and access. The jetty opened on Sunday, 4th May 2025, and this historic milestone marks the culmination of dedicated efforts to restore a vital maritime link that has been closed since 2021 due to damages caused by prolonged exposure to seawater. The revitalization of Lomaloma Jetty promises to significantly benefit the local community, bolstering economic activity, improving the flow of goods, services, and people, and reinforcing the island’s strategic connectivity with the mainland and beyond.

Lomaloma Jetty has long served as the lifeline for over 780 residents of Vanuabalavu Island, providing essential access for passenger travel and cargo transportation. Its strategic location supports the daily livelihoods of villagers across the 17 villages on Vanuabalavu, facilitating the movement of goods, agricultural produce, and essential supplies. The jetty’s reopening will enable reliable and regular maritime services, including monthly franchise vessel operations, private vessel trips, and government shipping services, which typically make two to three trips annually.

The Provincial Administrator for the Lau Group, Mr. Iokobo Waqanidrola, said the Lomaloma Jetty had been a long-standing issue, and its reopening has addressed the urgent need for improved infrastructure for the people of Vanuabalavu Island. **“The reopening of our Lomaloma Jetty is not just a repair; it is the mending of our island’s heart. Since 2021, we have felt the absence of this vital link, and the reopening of the jetty has brought relief for the people with daily movement of goods and services,”** said Mr. Waqanidrola.

“We are working towards narrowing the gap between the urban and island communities in terms of infrastructure service delivery,

and we are grateful to have the jetty operational again. This will now also provide a significant boost for tourism as we have a better port of entry,” he added.

The upgrades and maintenance carried out in preparation for the reopening, which included targeted improvements to the jetty’s steel decking and structural components, reflect a commitment to ensuring safety, durability, and reliability. The FRA recognizes and appreciates the patience and resilience of the Vanuabalavu community during the closure period. The Mata-ni-Tikina of Lomaloma Island, Mr. Jone Soiakau, speaking to FRA, said he is so grateful to FRA for the new jetty and the work carried out to restore the jetty.

“Our families have struggled to travel, our farmers have faced challenges getting their produce to market, and the flow of essential goods has been a constant worry. This jetty is more than concrete and steel; it is our connection to the world, from bringing in supplies to welcoming back our loved ones,” he said. **Seeing that the loading and unloading of goods has become so easy fills our hearts with immense gratitude and hope.**

The FRA has shown us that we are not forgotten, and this reopening is a promise of a brighter future for all of Vanuabalavu, he said. The reopening of Lomaloma Jetty underscores the government’s dedication to providing safe, reliable, and efficient transportation links to outer islands, which are essential for social cohesion, economic prosperity, and improved quality of life. As we celebrate this milestone, we reaffirm our commitment to ongoing investments in infrastructure that strengthen connectivity, promote tourism, and support the vibrant livelihoods of island communities. FRA looks forward to seeing the positive impacts this development will bring, not only in terms of economic activity but also in enhancing social well-being and environmental sustainability across Vanuabalavu.

COMMUNITY FEEDBACK



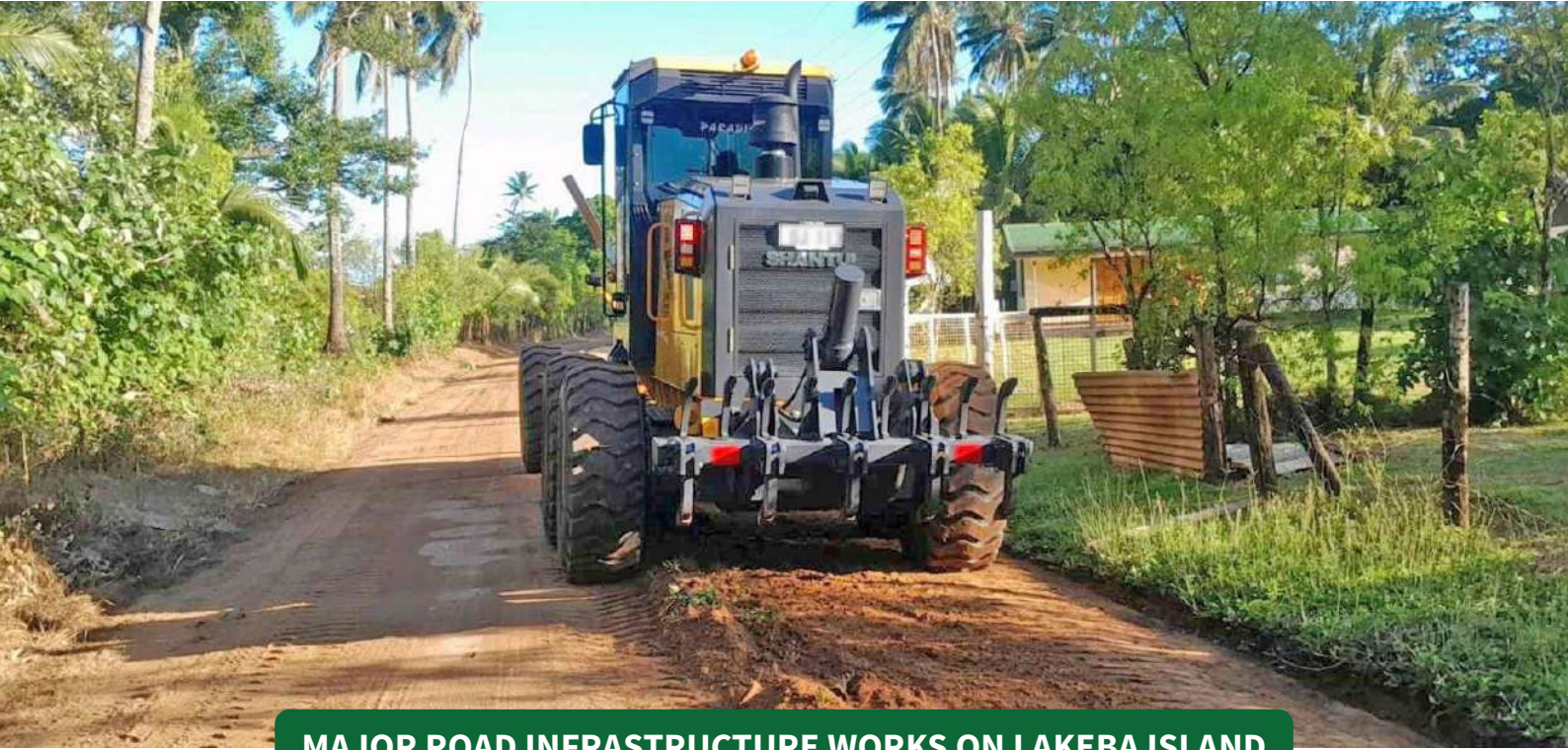
Mr. Iokobo Waqanidrola
Lau Group Provincial Administrator

“Lomaloma Jetty had been a long-standing issue, and its reopening has addressed the urgent need for improved infrastructure for the people of Vanuabalavu Island. The reopening of our Lomaloma Jetty is not just a repair; it is the mending of our island’s heart. Since 2021, we have felt the absence of this vital link, and the reopening of the jetty has brought relief for the people with daily movement of goods and services. We are working towards narrowing the gap between the urban and island communities in terms of infrastructure service delivery, and we are grateful to have the jetty operational again. The opening of the jetty will now provide a significant boost for tourism, as we have a better port of entry.”



Apakuki Vasuinubu
Station Officer
Vanuabalavu Police Station

“I sincerely thank the Fiji Roads Authority for their extensive work in reconstructing the jetty and restoring its operations. In the past, the deteriorated condition of the old jetty led to accidents and safety concerns. With the new jetty now in place, there is a clear sense of relief among the people. It has significantly improved safety, made loading and unloading cargo much easier, and restored hope for the people and children of Vanuabalavu.”



MAJOR ROAD INFRASTRUCTURE WORKS ON LAKEBA ISLAND

Major road rehabilitation and maintenance works on Lakeba Island, has improved transportation links and enhanced safety for over 1500 people. The project covered various infrastructure improvements, including road grading and graveling, culvert and drainage installations, concrete pavement repairs, coastal protection works, restoration of the jetty causeway, and foot crossing upgrades.

These works are essential in supporting the island’s transportation network, which is critical for daily commuting, access to services, economic activities, and emergency response. The road works focus on several key routes—the Lakeba Circular Road, the Lakeba Airstrip Road, access roads leading to various villages such as Tubou, Nasaqalau, Vakano, Yadrana, Nukunuku, Waitabu, Waciwaci, and Levuka, and institutional roads that connect important public services such as hospitals, schools, government stations, and utilities.

These roads serve as lifelines for residents, providing vital connections between communities and essential infrastructure. The Mata-ni-Tikina of Lakeba Island, Mr. Salesi Kinikinilau, expressed his gratitude to the Fiji Roads Authority (FRA) for the ongoing roadworks on the island and the positive impact they are already having on the community.

“We are very fortunate that FRA responded to our request. Just a few months ago, the road conditions

were poor, but we’ve seen a significant improvement,” he said.



In addition to road surface works, drainage and culvert installations are being carried out. These improvements are crucial in safeguarding road longevity and ensuring year-round accessibility. One of the critical components of the project is the reinstatement of the jetty causeway. This structure plays a vital role in enabling boats to safely dock and offload goods and passengers.

The Provincial Administrator for the Lau Group, Mr. Iokobo Waqanidrola, said Lakeba Island is one of the major centre for the Lau Group and expressed gratitude for the ongoing roadworks and the rehabilitation of the jetty causeway. “Its restoration will not only enhance the efficiency of marine transport but also support economic activity such as trade, which is vital for the island’s growth,” he said.

“I compliment the good work carried out by FRA and look forward to the new road improvements once completed,” he added.

The project, when completed, is expected to bring long-term benefits to Lakeba’s residents, businesses, and institutions by improving access to essential services.

These ongoing developments highlight the importance of continued investment in rural infrastructure and demonstrate a strong commitment to the well-being and sustainable development of outer island communities by FRA.

A total of 30 kilometers of road are scheduled for rehabilitation, with the project expected to be completed by the end of June this year, weather permitting.

COMMUNITY FEEDBACK



Mr. Salesi Kinikinilau
Mata-ni-Tikina of
Lakeba Island

“We are very fortunate that FRA responded to our request. Just a few months ago, the road conditions were poor, but we’ve seen a significant improvement. It makes travel easier when roads are good. With three primary schools, three kindergartens, and one secondary school on the island, it’s a great relief—especially for our students—who can now be more safely and easily transported by the RSL.”



IMPROVED ROAD BRINGS RELIEF FOR KORONIVIA RESIDENTS

Good roads are more than just a means of transportation—they connect communities, improve access to essential services, boost economic activity, and enhance quality of life. A major milestone for the Koronivia community, as the road leading through the area to the end of Nakaikogo Primary School is being tar sealed for the very first time.

After years of navigating dusty tracks and muddy conditions, residents are finally seeing long-awaited progress that promises safer, smoother, and more reliable access for vehicles, pedestrians, and public services. The people of the community have responded positively, expressing their appreciation and support for the long-awaited road improvement.

Children are among the greatest beneficiaries of the new road. Nakaikogo Primary School, located within the community, is attended by many local students, and parents have expressed deep gratitude that the journey to school will now be safer and more accessible for their children. Litiana Tiko, a resident of the community for the past six years and a mother of one, shared her appreciation

for the much-needed road upgrade, noting the significant difference it will make compared to previous years.

“I am truly grateful that FRA is finally improving this road. In the past, heavy rain would cause so many issues. There were times we couldn’t even send our children to school because of the poor road conditions. Now, we’re relieved and happy—this development will bring real change to the community, especially for the school,” she said.

For farmers, the improved road access means they can now transport their produce with fewer delays and better access. Waisea Tava, a farm assistant who works alongside other laborers in the area, says the new roadworks are a welcome improvement for everyone, especially farmers. **“We use large trucks to transport manure for the farm and vegetables, and the road upgrades have made things much easier for us,”** he said. **“It’s good for the community—now buyers can reach us more easily, and the whole process is much more convenient,”** he added.

The advisory counselor for the area, Satya Deo, also expressed his sincere appreciation to the Fiji Roads Authority (FRA) for commencing the

long-awaited works in Koronivia, admitting he never expected the project to begin so soon.

“The new road will bring great relief to the people of Koronivia, especially the students of Nakaikogo Primary School—their daily walk to school will now be much easier. When road and bridge conditions are good, the entire community benefits,” he said.

The Fiji Roads Authority acknowledges the vital role that a well-maintained road network plays in driving economic growth and improving access to essential services. As part of its medium to long-term development plans, FRA is working towards delivering better roading infrastructure. The road works are progressing well, with 660 meters of sealing completed on the old seal and 700 meters of shoulder widening works successfully carried out.

In total, 2.4 kilometers of road in Koronivia are scheduled to be rehabilitated as part of this project. The tar sealing and road improvement works are expected to be completed by early July, bringing benefits to residents and daily commuters.

COMMUNITY FEEDBACK



Ms. Litiana Tiko
Resident

I have been a resident of the community for the past six years, and I am truly grateful that the Fiji Roads Authority is finally improving the Koronivia Road. In the past, heavy rain would cause so many issues. There were times we couldn’t even send our children to school because of the poor road conditions. Now, we’re relieved and happy—this development will bring real change to the community, especially for the school. We also had to constantly wash everything—sometimes even rewash clothes because the dust would settle on them again. We used netting sheets to cover our house just to keep the dust from collecting on the roof and walls. It’s been a real challenge for us. The much-needed road upgrade will bring a significant difference compared to previous years.



Mr. Satya Deo
Advisory counselor

I thank the Fiji Roads Authority (FRA) for commencing the long-awaited works in Koronivia. I never expected the project to begin so soon. The new road will bring great relief to the people of Koronivia, especially the students of Nakaikogo Primary School — their daily walk to school will now be much easier.

When road and bridge conditions are good, the entire community benefits. Koronivia is a rapidly developing area — we have a restaurant, supermarket, service station, shops, and a large number of farmers. Improved infrastructure will support this growth and make everyday life better for everyone.



OVER 260 STUDENTS BENEFIT FROM ROAD UPGRADES AT NAWAI

Over 260 students from five major villages have benefited from the recent road upgrade and rehabilitation works leading to Nawai Secondary School and Nawai Public School (Primary). Mr. Shavneel Kumar, principal of Nawai Secondary School, expressed his gratitude to the Fiji Roads Authority (FRA) for the significant improvements, highlighting how the upgrades have made a positive impact

on the students' daily commute. Nawai Secondary School has approximately 120 students, while the primary school has 140 students, in addition to a kindergarten. The road improvements have been a major relief for the entire school community. The FRA's work included road repairs, tar sealing, and drainage improvements, ensuring safer and more reliable access for students and their families.

COMMUNITY FEEDBACK



Mr. Shavneel Kumar
Head of Nawai
Secondary School

“Previously, the roads were in poor condition, making it difficult for parents to drop their children safely at school. With the recent upgrades, parents can now easily access the school compound, and the roads are much safer to use. With the road upgrades, parents are now able to drive to the school compound to drop their children. We are really thankful to the FRA for upgrading the roads when it was much needed.”



NAMELIMELI VILLAGE TO BENEFIT FROM NEW 200-METER ACCESS ROAD

The construction of a new access road for Namelimeli Village in Namosi Province will connect more than 400 villagers to essential services. With a total length of 200 meters, this vital project will establish a reliable and safe transportation link for the residents of Namelimeli Village, facilitating access to essential services, markets, and employment opportunities, thereby fostering economic growth and enhancing overall quality of life.



NEW BUS SHELTERS IMPROVE SAFETY AND COMFORT FOR VILLAGERS

FRA has completed three newly constructed bus shelters—one at the Navua junction along Queens Road, another in Nakorovou Village, Rewa Province, and one along Mead Road—bringing greater convenience, comfort, and safety to commuters in communities. The shelter at Navua junction has been well-received by the public, offering a much-needed upgrade to infrastructure that supports both daily passengers and public transport operators in the area. Meanwhile, villagers of Nakorovou have also expressed their appreciation for their newly built shelter.

Children and residents are especially pleased, as the shelter provides vital protection from unpredictable weather, making school and work commutes more manageable. FRA is committed to delivering infrastructure that enhances public transport accessibility and safety across the country. The Authority encourages communities to take pride in these new facilities by keeping them clean and free from vandalism, ensuring they continue to benefit current and future users.



NEW ROAD CONSTRUCTION IN LEA VILLAGE BOOSTS CONNECTIVITY

The new road construction in Lea Village, Cakaudrove Province, home to 59 families, will significantly improve connectivity and accessibility in the area. This development will ease commutes, especially for school children who previously depended on boat transportation to Drekeniwai every Monday, returning on Fridays. The road will also provide farmers with better access to markets and enable villagers to reach essential services more

efficiently. FRA recently met with Lea Village Headman, Mr. Luke Nakaria, who expressed his gratitude for the ongoing road works. Mr. Nakaria shared that the road had been a concern for nearly 20 years, as it offers the most direct route to the main highway, just a 10-minute drive from the village. **“This project is life-changing, making travel easier for children to attend school and for villagers to transport produce and goods to the market. It brings a brighter future for our village,”** he said.



ROAD REHABILITATION COMPLETED AT KALABU TAX-FREE ZONE

Asphalt concrete pavement works were successfully carried out in the Kalabu Tax-Free Zone to improve road conditions and enhance durability. Roadworks were undertaken to improve road surface deterioration caused by frequent traffic, adverse weather conditions, and natural wear over time. The project involved removing the damaged asphalt, repairing the underlying road base, and applying a fresh layer of asphalt concrete to ensure a smoother, safer, and longer-lasting surface for all users.



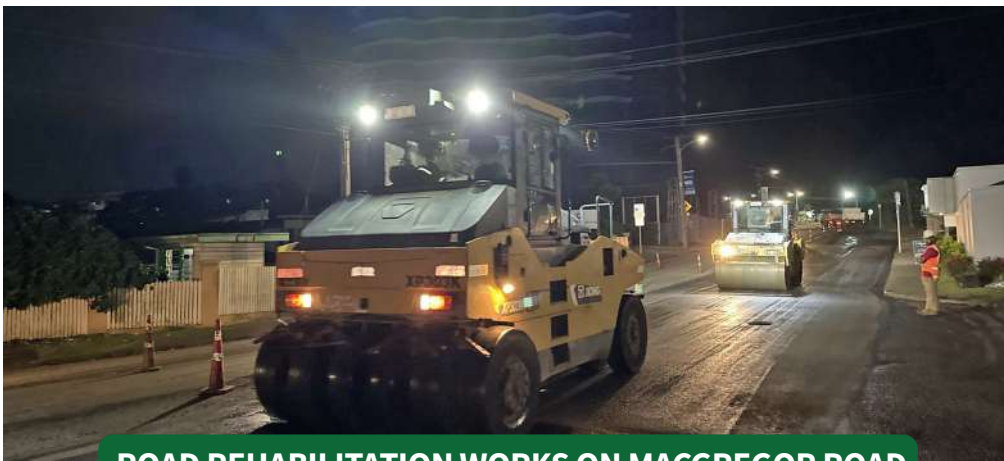
ROAD UPGRADES ALONG ONEVA FRONTAGE

Road upgrade works were carried out in the Northern Division, with chip sealing successfully completed along the Oneva Frontage. The initiative aimed to substantially improve the road surface, enhancing both safety and overall driving conditions for commuters in the area.



ROAD IMPROVEMENT WORKS ON SEVACI KOROTASERE ROAD

Grading, compaction, and drainage improvements on Sevaci Korotasere Road, in the Northern Division, creating safer and more reliable transportation, improving accessibility, and enhancing the overall well-being of the community through strengthened linkage between villages and improved connectivity to greater services.



ROAD REHABILITATION WORKS ON MACGREGOR ROAD

Asphalt concrete pavement work was completed on MacGregor Road. The rehabilitation works aimed at enhancing the road surface, improving traffic flow, and raising infrastructure standards within the Suva Central Business District, ensuring a safer and more efficient commute for road users daily.



IMPROVED ACCESS FOR PEOPLE OF NAVIDAMU ROAD IN MACUATA

A 310-meter section of Navidamu Road in Macuata Province, Northern Division, had undergone double-coat chip-sealing, resulting in improved access for the villagers and Korotolutolu Primary School. The enhanced road surface provides improved traction, mitigates dust pollution, and fosters better connectivity for the community.



NADI BAY ROAD UPGRADE

As part of ongoing road infrastructure improvements in Nadi, sealing work was carried out on Nadi Bay Road. This crucial upgrade involved addressing underlying road issues and applying a new, durable, sealed surface. The aim is to enhance road quality and facilitate more efficient traffic movement.