



**Fiji** Roads Authority

---

# PUBLIC ADVISORY

---

## **NASAU BRIDGE 1 NADI - EMERGENCY CLOSURE**

Fiji Roads Authority (FRA) wishes to advise members of the public that Nasau Bridge 1 on Nasau Road in Nadi will be temporarily closed for 1 month to carry out emergency abutment reconstruction works due to accelerated deterioration as per the current condition status.

**Bridge closure will be in place from 5am Wednesday, 10<sup>th</sup> July to 6pm Saturday, 10<sup>th</sup> August.**

Road closure advisory signs will be posted in advance of the closure period to direct motorists on detour routes.

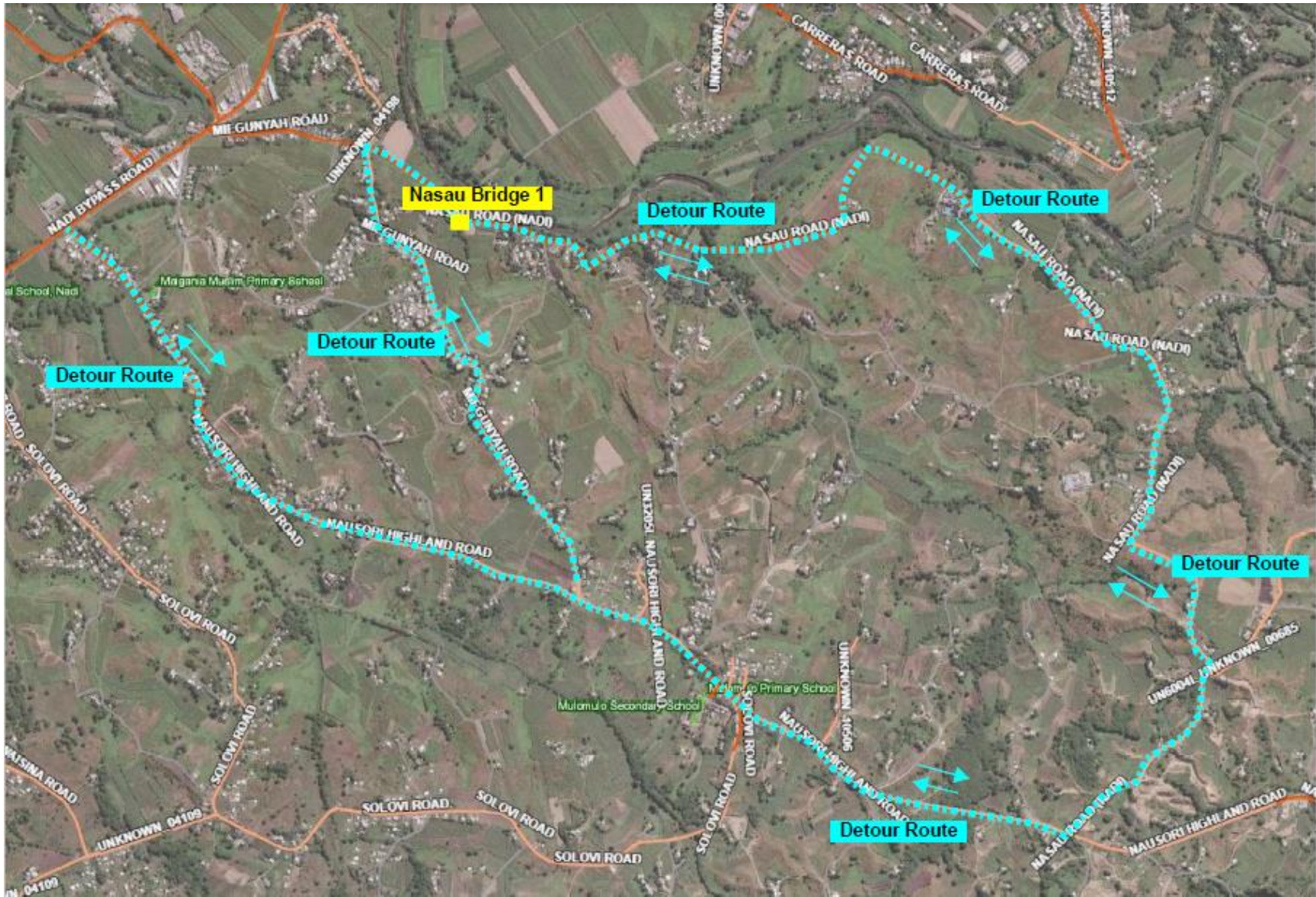
The alternative route available is marked in the locality map below. Motorists are requested to plan their travel accordingly.

We apologise for the expected inconvenience. Should you have any questions or require additional information, please do not hesitate to reach out to the FRA via our toll-free number 5720 (available on weekdays from 8am to 5pm) or through email at [info@fijiroads.org](mailto:info@fijiroads.org)

**Atunaisa Naiyago**

**Executive Chairman**

### Nasau Bridge 1 Emergency Closure



Nasau Bridge 1 Emergency Closure



19/04/2024 9:44:31 am