
PUBLIC ADVISORY

EMERGENCY WEIGHT RESTRICTION ON NADARIVATU ROAD

Fiji Roads Authority (FRA) wishes to inform the general public that an emergency weight restriction will be placed on Nadarivatu Road, Tavua at CH23100 – CH23200 by 8pm tonight (Tuesday 23 February 2021) till further notice.

Post consecutive heavy rains in the Nadarivatu area from Tropical Cyclone Ana to date, a crack along the subsection section has been noted and a dedicated field team has been monitoring the section daily.

The continuous afternoon heavy rains and heavy traffic has further accelerated length of crack long road section. A potential road under slip will occur should the existing frequent rain weather remain. Post risk assessment, a weight restriction will be in effect as above mentioned.

The weight restriction is 5 TON Gross Weight and vehicle restriction to 4x4s and 3 tonne vehicles. Daily and weekly risk assessments will be conducted and the general public will be advised on further developments.

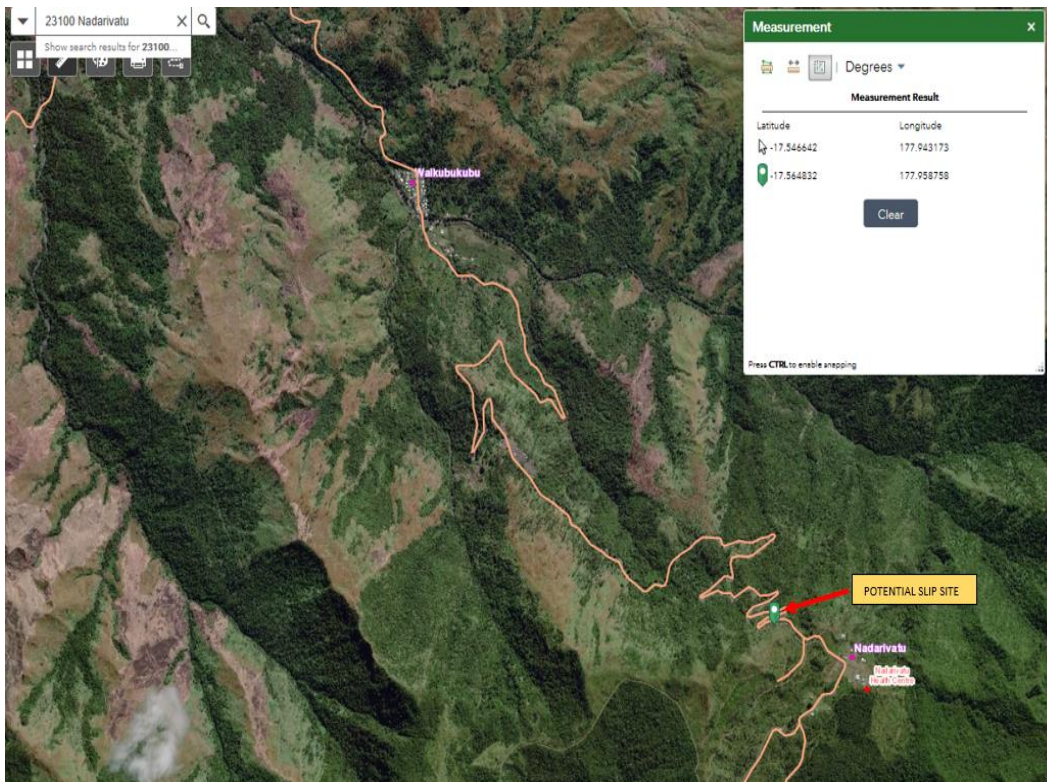
FRA Contractor Traffic Management Teams with the Fiji Police and Land Transport Authority will be at both ends of the weight restriction site to redirect heavy vehicle traffic. Detour roads are available for heavy traffic to and from Nadarivatu area but will be subjected to weather conditions.

NB: LOCALITY MAPS BELOW

Site Locality



LOCALITY MAP 1: Location of Slip with respect to Tavua Toad



LOCALITY MAP 2: Location of Slip with respect to Waikubukubu & Nadarivatu Government Station.