

QUARTERLY NEWSLETTER | 2026



APRIL - JUNE
[ISSUE 2]



FIJI ROADS AUTHORITY ENHANCES COMMITMENT TO PREVENT SEXUAL EXPLOITATION, ABUSE, AND HARASSMENT THROUGH SPECIALIZED TRAINING



The Fiji Roads Authority (FRA) senior management took a significant step forward in strengthening its commitment to creating a safe and respectful working environment by participating in a targeted five-day training programme on the Prevention of Sexual Exploitation, Abuse, and Harassment (PSEAH). The training, supported by the Australian Government through the Australian Infrastructure Financing Facility for the Pacific (AIFFP), was conducted from 15 to 19 June 2026 at the Fiji Learning Institute for Public Service (FLIPS) in Nasese, Suva.

Facilitated by experienced trainers Tessa Walsh and Tevita Seruilumi from evawtech, the program focused on building capacity among FRA leaders and staff to better understand, prevent, and respond to issues related to gender-based violence and safeguarding. The comprehensive training covered vital areas such as procurement obligations, social safeguards, SEAH complaints handling procedures, and effective complaint

resolution processes. It also included specialized induction sessions for FRA Board Members, staff, and contractors to embed awareness and best practices across the organization.

The overarching goal of the training was to enhance the performance of the Fiji Roads Sector in preventing sexual exploitation, abuse, and harassment, ensuring that all operational activities; whether in capital works or maintenance are conducted in a manner that upholds the dignity and rights of all individuals involved.

Key topics discussed during the training included increasing understanding of gender-based violence within the context of FRA's

operations, clarifying expectations and responsibilities during procurement processes, sharing tools for monitoring contractor compliance with SEAH risk mitigation measures, and developing skills for receiving and managing complaints related to SEAH. Participants were also equipped with knowledge to conduct effective inductions on SEAH issues for staff and contractors, fostering a culture of accountability and safety.

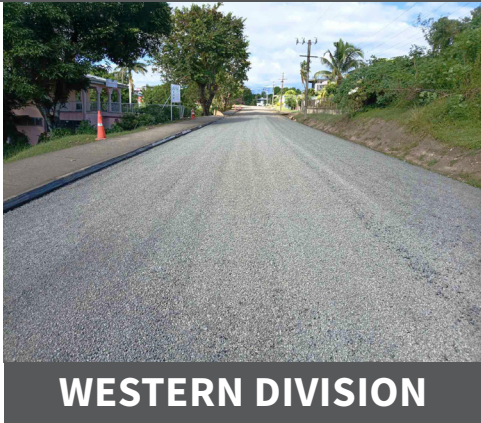
This initiative underscores FRA's ongoing dedication to promoting gender equality, safeguarding staff and contractors, and ensuring that the organization upholds the highest standards of safety and respect in all its operations.

“ The training was an eye-opener for many of the participants, particularly for males in senior leadership positions. It provided an opportunity for participants to differentiate between gender attributes, privileges, and opportunities associated with specific genders, as well as understand the different types of gender-based violence and safeguarding measures.

- Fiji Roads Authority's Chief Executive Officer, Mr. Apisai Ketenilagi

”

FRA DELIVERS MAJOR ROAD IMPROVEMENTS ACROSS THREE DIVISIONS



WESTERN DIVISION

Communities across the Western Division are continuing to benefit from extensive road infrastructure upgrades as the Fiji Roads Authority (FRA) progresses a wide range of sealing, rehabilitation, renewal, and connectivity improvement works across urban, peri-urban, and rural areas.

These ongoing works are improving access to schools, health facilities, businesses, and public services while strengthening safety, resilience, and transport efficiency across the division.

COMMUNITY ACCESS, SAFETY AND ESSENTIAL SERVICES UPGRADES



Significant improvements have been delivered to enhance access to essential services and community facilities.

More than 700 metres of road at Nausori Highland Village and the frontage of Ratu Nalewavada Public School have been successfully sealed, improving access and safety for over 100 students and nearby residents.

Rip and Remake works have also been completed at Lautoka Hospital, Ba Health Centre, and Nailaga Health Centre, significantly improving road

conditions and access for patients, staff, and surrounding communities.

A 70-metre access road at Lautoka Special School has been sealed, improving safety and ease of access for students and staff.

In Koronubu Road, 288 metres of previously unsealed road in front of the Benai Police Post has been sealed, improving access for the public and visitors.

In Tavua, 272 metres of sealing works along Magazine Road have improved access to Nelson College and the Vatukoula Police Post.

In Rakiraki, 225 metres of Malake Landing have been upgraded, improving access for communities and members of the public travelling to nearby islands.

NADI AND WESTERN CORRIDOR ROAD IMPROVEMENTS



Major upgrades along key transport routes in Nadi continue to improve safety, flow, and accessibility.

Approximately 780 metres of asphalt concrete surfacing along Denarau Road from the Denarau Roundabout has been completed. Footpath reconstruction will be undertaken in a subsequent phase.

Nearly 2 kilometres of asphalt concrete surfacing along Queens Road from Navoci Village to Goundar Road have been completed, improving driving conditions and safety. Footpath reconstruction from Nalagi Hotel to McDonald's will follow in a later phase, while an additional 380 metres from Namotomoto to the Denarau Road

Roundabout is currently in progress.

Along Votualevu Road, 200 metres of asphalt concrete surfacing (Mill and Fill) from New World IGA to Novotel Junction has been completed. Votualevu Roundabout works are also currently in progress.

BA, TAVUA AND RAKIRAKI URBAN AND RURAL UPGRADES



Several urban and rural communities continue to benefit from targeted improvements.

In Ba, 295 metres of Nukudrala Street have been completed, improving local connectivity.

In Tavua, 272 metres of Magazine Road sealing works have improved access to key institutions.

In Rakiraki, approximately 1,200 metres of Korotale Road have been sealed, improving access for businesses, motorists, and pedestrians while supporting economic activity.

TOWN AND URBAN AREA IMPROVEMENTS (RIP AND REMAKE PROGRAMME)



FRA's Rip and Remake Programme continues to upgrade town roads, parking areas, and CBD accessibility.

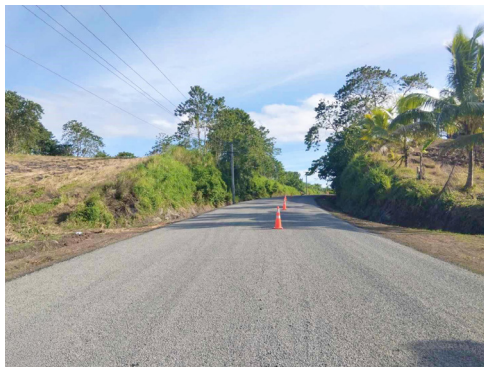
In Ba Town, 200 metres of sealing works at Tabua Circle have been completed, including parking areas on both sides of the circular road. An additional 28 metres at Tabua Park have also been completed, improving parking conditions and public access.

Works along Nukudrala Road and Nareba Street in the Ba CBD have covered a total of 534 metres, improving access for businesses, motorists, and pedestrians.

In Lautoka, 439 metres of Sukanaivalu Road have been completed, along with 320 metres of Ram Sami Reddy Road and 213 metres of Bavadra Road, improving local connectivity.

In Nadi, three roads in Savunawai Stage 2, Yavulagi Road (270m), Vatutoka Road (180m), and Takubu Road (265m); have been completed, totaling 715 metres. Additionally, 160 metres of Legalega Road have been completed.

RENEWALS AND NETWORK STRENGTHENING WORKS



Under the Renewals Programme, FRA continues to strengthen key transport corridors across the Western Division. Along Kings Road at Nasavusavu Village frontage in Nalawa, Ra, 262 metres of resealing works have been completed, with an additional 800 metres currently underway to improve durability, waterproofing, and long-term performance.

In Tavua, approximately 2,355 metres of Loloma Road have been upgraded, improving access to the Vatukoula Gold Mines and supporting economic activity.

In Sabeto, Nadi, 250 metres of Thomson Road have been completed,

LAUTOKA AREA CONNECTIVITY AND INFRASTRUCTURE IMPROVEMENTS



FRA continues to invest heavily in the Lautoka corridor to improve resilience, safety, and connectivity.

A total of 816 metres of road widening has been completed along Vuda Back Road, improving traffic flow and resilience.

Along Ravouvou Road, 670 metres of sealed road rehabilitation have been carried out.

New footpath construction covering 1.626 kilometres across three sites is currently ongoing, improving pedestrian safety and access.

Three new bus shelters have been installed to improve public transport convenience.

Frontage sealing works include 660 metres along Vitogo Village Road (70% complete) and 200 metres along Viseisei Back Road West.

Replacement of 18 streetlight poles along Marine Drive has been completed, improving visibility and night-time safety.

New footpaths have been completed at multiple locations, including:

- Cawa Road (480 meters)
- Brewers Road (60 meters)
- Andrews Road (950 meters)
- Queens Road on both sides of Vuniyasi Bridge (500 meters).

In addition, two new bus shelters have been constructed along Denarau Road and at the junction of Concave Drive in Namaka. FRA remains committed to delivering reliable, safe, and sustainable road infrastructure across the Western Division. These

works reflect continued investment in both urban and rural communities, improving access, supporting economic activity, and enhancing daily mobility.

These improvements also contribute to the long-term resilience of the Western Division's transport network. By strengthening vulnerable road sections, improving drainage, upgrading pavement conditions, and enhancing connectivity, FRA is helping communities better withstand the impacts of heavy rainfall, flooding, and other climate-related events while ensuring safer and more reliable access during emergencies and adverse weather conditions.

The Authority will continue prioritising critical road corridors and community access routes as part of its ongoing programme to address deteriorating road conditions, strengthen vulnerable sections, and improve overall network resilience across the Western Division.



The Fiji Roads Authority continues to improve road accessibility and strengthen the road network across the Central Division through a series of completed and ongoing infrastructure projects aimed at delivering safer, smoother, and more reliable travel for communities and road users.

The works form part of FRA's ongoing commitment to maintaining and upgrading roads throughout the division, improving connectivity, supporting economic activity, and enhancing the everyday travel experience of motorists and pedestrians.

RESEALING WORKS IMPROVE LOCAL ROADS



Resealing works have been carried out at several locations across the Central Division to improve road conditions and extend pavement life.

At Vere Road in Laucala Beach, more than 300 metres of resealing works have been completed, with works continuing in the area. Improvement works have also been undertaken on Bati Road, located off Vere Road.

Along Maddock Road, off Mead Road, more than 300 metres of resealing works have been completed, providing improved access and smoother travel conditions for residents and road users.

Additional resealing projects completed include:

- Jai Hanuman Road – 613 metres of reseal works, including footpath and drainage improvements.
- Sovu Place, Samabula – 80 metres of reseal works.
- Rokosawa Road, Cunningham – 547 metres of reseal works.
- Biau Drive, Cunningham – 717 metres of reseal works.
- Sam Lal Road, Bayview Heights – 140 metres of reseal works.

MILL AND FILL WORKS ACROSS KEY URBAN ROADS



Mill and fill works have been undertaken on several roads within the Suva area to improve pavement conditions and enhance road safety.

Completed works include:

- Pender Street, Suva – 300 metres completed.
- Ratu Mara Road – over 550 metres completed, with works continuing.
- Ono Street – 702 metres.
- Bakashi Street – 246 metres.
- Moti Street – 179 metres.
- Toganivalu Road – 503 metres.
- Lekutu Street – 273 metres.

Works have also been carried out along Stinson Street, Toorak Street, and High Street as part of the ongoing road maintenance programme.

Additional mill and fill works are scheduled to be undertaken in the coming weeks at:

- Tawake Street – 192 metres.
- Sawani Street – 225 metres.
- Mal Street – 275 metres.
- Matuku Street – 227 metres.
- Moala Street – 360 metres.
- Helson Street – 236 metres.

MAJOR REHABILITATION AT JAI HANUMAN ROAD



Major rehabilitation works have also been undertaken along Jai Hanuman Road within the industrial area. The project includes drainage improvements, kerb and channel construction, footpath works, and an asphalt overlay works.

These improvements have enhanced connectivity and provided safer and more efficient access for businesses, workers, and daily commuters using the area.

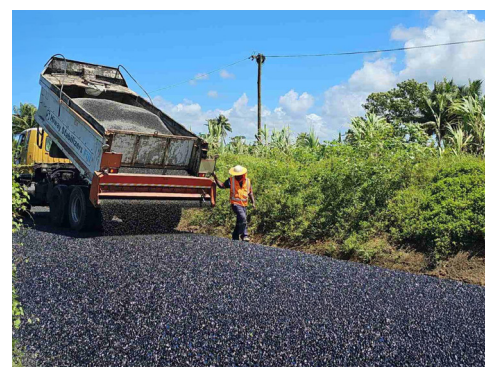
IMPROVEMENTS TO KEY TRANSPORT CORRIDORS



Further road improvement works have been completed on important transport routes within the Central Division.

Princes Road received 647 metres of mill and fill road improvement works, while Robertson Road benefited from 630 metres of mill and fill works, improving travel conditions and road reliability for thousands of daily road users.

NAVUA ROAD UPGRADES IMPROVE ACCESSIBILITY



Seal extension works carried out along Thompson Park Road, Thompson Park Back Road, and Tokotoko Road in Navua have significantly improved accessibility, safety, and overall driving conditions for daily commuters.

As part of FRA's programme for the current financial year, additional works were also completed along Naitonitoni Road, including sealing works at the Navua Town roundabout and along the Navua Town frontage.

The works also included the installation of new road markings and the construction of new bus shelters along these routes.

Collectively, these improvements have enhanced road safety and provided a more comfortable travel experience for both motorists and pedestrians in the area.

These upgrades form part of the Fiji Roads Authority's ongoing commitment to maintaining and improving the road network across the Central Division.

FRA will continue to deliver essential road upgrades, rehabilitation projects, and maintenance works to improve connectivity and ensure safe, reliable, and resilient transport networks for all road users.



NORTHERN DIVISION

The Fiji Roads Authority continues to deliver road infrastructure improvements across the Northern Division through a range of road upgrading, sealing, and rehabilitation projects aimed at improving accessibility, strengthening transport networks, and enhancing safety for communities.

These projects form part of FRA's ongoing commitment to providing safer, smoother, and more reliable transport connections while supporting social and economic development throughout the division.

UPGRADING RURAL ROADS AND COMMUNITY ACCESS



Significant progress has been made under the Rip and Remake Programme, with the upgrade of the Bucabay Rehabilitation project from Kasavu to Nanuca Village.

A total of 800 metres of unsealed road has been upgraded to sealed standard, improving accessibility and providing residents with a safer and more reliable route. The upgraded section enhances connectivity between communities and contributes to improved travel conditions for road users.

Additional asphalt concrete works have also been carried out along the Korosun frontage on Bucabay Road, further strengthening the road network within the area.

Road improvement works have also been completed along Sangam Avenue, where 200 metres of two-coat sealing works were undertaken as part of the Rip and Remake Programme.

As part of ongoing road improvement efforts in the Northern Division, sealing works have also been completed on a 187-metre section of Bhujawan Road. This upgrade has improved connectivity within the area while providing a safer and more reliable route for motorists, pedestrians, and surrounding communities.

MAJOR UPGRADE FOR DREKETI TRADING AND MINI MARKET AREA



For many travelling to the Northern Division, a stop at the Dreketi Trading or Dreketi Mini Market area, particularly when passing through Dreketi, has become almost a routine part of the journey. Buses using ferry services often pause here, giving passengers time for a quick break, whether to visit the market, shop,

or use nearby facilities. To improve accessibility and safety in the area, the market surroundings and the connecting road have now been sealed, providing better access for vendors, commuters, and all road users. Speaking to the Fiji Roads Authority, owner of Dreketi 1 Stop Shop, Mr. Piyush Patel, thanked FRA for the sealing works carried out.

"This comes as a good road improvement project that will now provide us with better roads and an improved market area. The issue of dusty roads will now be solved since the roads have been sealed," he said.

This busy and convenient stop has long served both travelers and local vendors. Ms. Queenie Nivoi, Dreketi District Advisory Councilor, also thanked the Fiji Roads Authority and its contractors for carrying out the sealing works in the market area.

"I am thankful for the work done. Previously, dust was also an issue for the market vendors selling food and other goods, but now this will solve the issue and bring relief to the vendors," she said.

The Fiji Roads Authority continues to improve road connectivity and support safer, more accessible transport infrastructure across Fiji.

SEALED ROADS BRING SAFER ACCESS AND RELIEF TO DREKETI SCHOOLS AND COMMUNITIES



Three schools in Dreketi, Northern Division, are celebrating a major improvement to their school access roads and frontages, following the completion of sealing works that have made daily travel safer and more convenient for students, parents, teachers, and commuters.

The road upgrades at Dreketi Central College, Dreketi Primary School, and Maramarua District School have significantly improved accessibility for hundreds of students who previously faced muddy conditions during wet weather and dusty roads during dry periods.

For the first time in 58 years, the road leading to Dreketi Central College has been sealed, bringing relief to the school community of 450 students and nearby residents. Principal Mr. Amoni Tuvui described the development as a major breakthrough for the area.

“With over 380 metres of road now sealed, accessibility has improved greatly compared to before,” Mr. Tuvui said.

He added that parents are especially grateful, as student drop-offs and pick-ups are now much easier and safer. At Dreketi Primary School, which has 173 students and 23 kindergarten students, Head Teacher Mr. Shalendra Vijay shared that students previously struggled to travel during rainy weather due to muddy road conditions, while dust was a major issue during dry weather.

“With the roads now tar sealed, travelling to school has become much easier and safer for our students,” he said.

Similar sentiments were shared by Head Teacher of Maramarua District School, Mr. Semi Goletoka. The school has 253 students, and the improved road access has greatly benefited daily travel for students and parents alike.

“Bus and transport services, including RSL services, now have better accessibility to the school area and this is great news for us all,” said Mr. Goletoka.

FRA continues to improve road accessibility and connectivity in rural communities to ensure safer and more reliable travel for students, parents, and all road users. These projects demonstrate FRA’s ongoing commitment to improving road infrastructure and accessibility throughout the Northern Division. Through continued investment in road upgrades, rehabilitation works, and supporting infrastructure, FRA remains focused on delivering safe, reliable, and resilient transport networks that benefit communities, businesses, and road users across the division.

MAJOR INFRASTRUCTURE PROJECTS IN PROGRESS



PROGRESS AT VUNIKURA JETTY SITE



Enabling works are currently underway at Vunikura in Cakaudrove Province to facilitate the construction of the new Vunikura Jetty. Supported by the China Government through the Office of the Prime Minister, the project will strengthen maritime connectivity and improve access for surrounding communities.

Once construction begins, the new jetty is expected to enhance transportation links, support local businesses, and contribute to the long-term social and economic development of the region.

NEW BRIDGE PROJECTS

PROGRESS ALONG TAVEUNI’S MAIN ARTERIAL ROAD

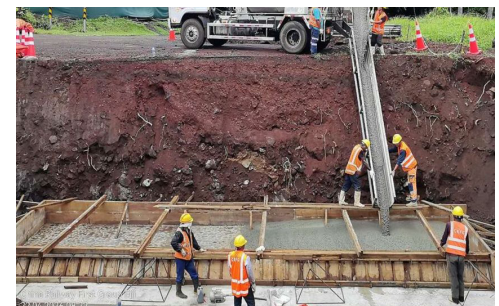
The four major bridges in Taveuni; Balili Bridge, Soqulu Bridge I, Soqulu Bridge II, and Soqulu Bridge III - form a key part of ongoing infrastructure improvements along the island’s main arterial road. Fully funded by the Fiji Government, these projects are being delivered to strengthen connectivity across the island. Strategically located along this important transport corridor, the bridges play a vital role in linking communities. Once completed, they will provide safer and more reliable access for school children, improve the movement of agricultural produce to markets, and support overall social and economic activity throughout Taveuni.

BALILI BRIDGE



Balili Bridge has a total length of 7.4 metres and a width of 10.5 metres. All necessary safety signage has been installed to ensure safe movement around the site. Bridge demolition works have been fully completed, and construction of the bypass road is also complete, allowing traffic flow to continue during construction. Excavation works for Abutment No. 1 are currently in progress as part of the ongoing structural works.

SOQULU BRIDGE I



Soqulu Bridge I measure 7.4 metres in length and 10.5 metres in width. All required safety signage has been installed at the site. Bridge demolition works have been completed 100%, along with full completion of excavation works for Abutments No. 1 and 2 and foundation treatment. Concrete blinding for both abutments has also been completed, as well as base slab works. Reinforcement works are currently in progress for the backwall and wing walls of both abutments.



SOQULU BRIDGE II

Soqulu Bridge II has a bridge length of 19.4 metres and a width of 10.5 metres. Safety signage has been fully installed, and demolition works have been completed 100%. Excavation and foundation treatment for Abutments No. 1 and 2 are fully complete, along with concrete blinding and base slab works. Reinforcement works are currently ongoing for the backwall and wing walls of both abutments.



SOQULU BRIDGE III

Soqulu Bridge III measures 19.4 metres in length and 10.5 metres in width. All safety signage has been installed, and demolition works have been fully completed. Excavation and foundation treatment for both abutments are complete, along with concrete blinding and base slab works. Reinforcement works for the backwall, and wing walls have been completed, and concrete pouring for these structures is also complete, marking significant progress on this bridge.



ROAD WORKS AND NEW BOX CULVERT AT SEMO, SIGATOKA ALONG THE QUEEN'S HIGHWAY

Works are currently underway at Semo, Sigatoka along the Queen's Highway, with an estimated construction period of approximately 15 weeks, subject to weather conditions and the availability of required materials.

IS IT RAIN, CLIMATE CHANGE, OR HUMAN NEGLIGENCE?

Not every road surface flooding is caused by torrential rain; sometimes the real problem starts with what we throw away and what we choose to ignore. For years, flooding at the Votualevu Roundabout has remained a persistent issue for motorists, and members of the public, especially during periods of heavy rain. While weather conditions often receive the blame, the ongoing drainage problem in the area also highlights the impact of improper rubbish disposal and negligence towards public infrastructure.

The Fiji Roads Authority carries out regular drainage maintenance works at the Votualevu roundabout in efforts to mitigate flooding in the area. However, despite these continuous efforts, the problem continues to reoccur. One of the major contributing factors to flooding in this area is the improper disposal of rubbish into drains and waterways. Recent jetting works carried out to clear the drains revealed large amounts of plastic bottles, food containers, shopping bags, and other waste materials blocking the drainage lines, preventing rainwater from flowing freely during heavy rainfall. As a result, water quickly builds up on the roads, causing flooding and disruptions to traffic.

Flooding issues are not unique to the Votualevu roundabout alone, as similar drainage challenges continue to affect several areas around the country. While infrastructure maintenance remains important, public cooperation is equally critical in helping reduce these recurring issues. Simple actions such as disposing of rubbish responsibly, avoiding dumping waste into drains, and taking greater care of public spaces can make a significant difference in reducing flooding. Clean drains allow water to flow efficiently and help keep roads safer for everyone.

The recurring flooding at Votualevu Roundabout serves as a reminder that maintaining infrastructure is not only the responsibility of authorities but also a shared responsibility of the community.



The project involves the survey, design, and construction of a box culvert, along with associated road repair works to restore and enhance roadway stability and drainage in the area. Construction activities, including the installation of the box culvert, are currently in progress.



Once completed, the works will improve drainage capacity, strengthen the road structure, and enhance safety and reliability for all road users along this key transport corridor.



COMMUNITY-LED ROAD MAINTENANCE DELIVERS INCOME, SAFETY, AND STRONG LOCAL SUPPORT UNDER FRA INITIATIVE



In partnership with the Government, local communities, and key stakeholders, the Vegetation Control Works Initiative was launched in 2025 to strengthen rural road maintenance while empowering communities.

Through this program, local communities—particularly in rural and village settings—are taking on a more active role in the routine upkeep of rural road infrastructure. Activities such as vegetation control, minor repairs, and general maintenance are now being carried out by the very people who rely on these roads daily.

The initiative has continued to receive strong positive feedback from participating communities and stakeholders, who have highlighted its tangible benefits, particularly in terms of income generation and community empowerment.

One such positive example is the Wainiyaku Social Club from Vuna, Taveuni. Since their involvement,

the club has been able to generate sustainable income, which has supported household needs, savings, and small business investments within the community.

Wainiyaku Social Club Manager, Mr. Navitalai Qali, expressed his appreciation for the initiative, noting the wide-ranging benefits it has brought to local families.

He added that women have actively supported vegetation control works and contributed through additional roles such as meal preparation during project activities.

Before the rollout of any initiative, the Fiji Roads Authority ensures all participating community groups undergo comprehensive induction

training conducted by the Traffic Safety Management Team. The training covers safe traffic management setup during worksites, the correct use of Personal Protective Equipment (PPE), and basic first aid procedures.

These sessions combine both theory and practical components to ensure participants are fully equipped to carry out their tasks safely and effectively.

In addition to skill development, participating community groups also receive fair and meaningful income in recognition of their hard work, further reinforcing the program's role in supporting rural livelihoods and strengthening community resilience.

“ We have been able to save and support different types of small businesses in the community. Not only men, but women are also able to earn through this program. ”
- Wainiyaku Social Club Manager, Mr. Navitalai Qali



MAJOR INFRASTRUCTURE PARTNERSHIP TO STRENGTHEN FIJI'S ROAD NETWORK

Australia's National Transport Research Organisation (NTRO) has signed a landmark partnership with the Fiji Roads Authority (FRA) for a 'Road Network Improvement Program' aimed at significantly improving the quality, resilience, and long-term performance of Fiji's road network.

This strategic collaboration represents a major step in enhancing the condition and durability of critical road network infrastructure across Fiji, supporting economic growth, community connectivity, disaster preparedness and climate resilience.

Under the partnership, the FRA and NTRO will work together around four key components:

- Network Condition Assessment & Baselining
- Asset Management Advisory & System Development
- Materials Science & Laboratory Advisory

- Capacity Building & Knowledge Transfer

FRA Chief Executive Officer Apisai Ketenilagi said the partnership marks a transformative opportunity for Fiji's critical road infrastructure:

'This collaboration with NTRO will provide us with world-class technical expertise and tools to better understand, manage, and improve our road network. It will enable us to deliver safer, more reliable roads for all Fijians, while strengthening our resilience to climate impacts. It is a program that will not only strengthen Fiji's road network through evidence-based decision making but also see the transfer of skills and knowledge between our two nations.'

NTRO's Executive Director and leader of the 'NTRO-Pacific' team, Jason Sprott highlighted the importance of the 'co-designed' program: 'We are extremely proud to partner with

the FRA team to deliver an exciting program of work. This partnership reflects a shared commitment between Fiji and Australia to sustainable infrastructure, so critical for the livelihoods of the Fijian population. Aligned with the 'Pacific Quality Infrastructure Principles', and through detailed discussions with the FRA team, the program has been co-designed to ensure practical impact, lasting value and technical knowledge exchange between our teams.



Road Surveying Vehicle - National Transport Research Organisation