

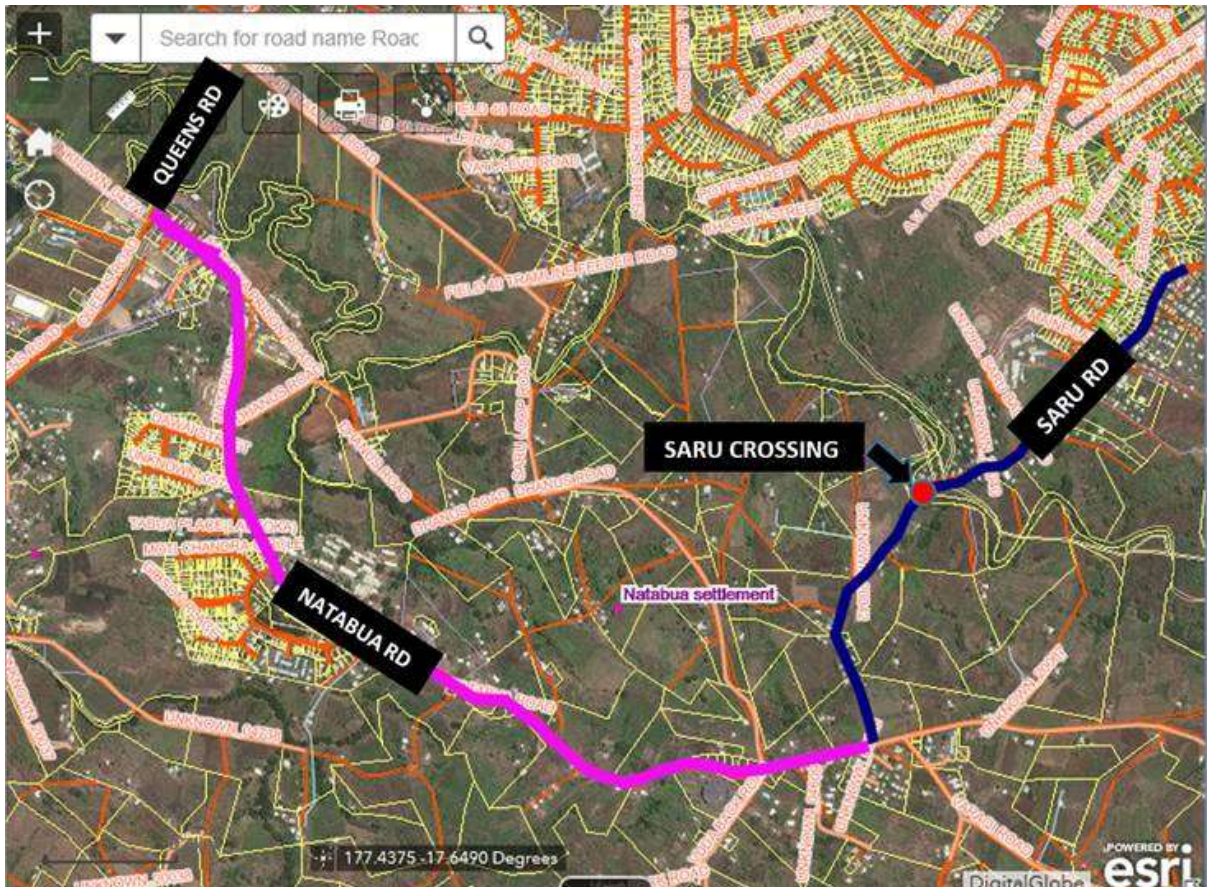
# PUBLIC ADVISORY

Fiji Roads Authority (FRA) would like to advise members of the public that Saru Bridge on Saru Road in Lautoka will be temporarily closed for maintenance works from:

**7am Saturday, 5<sup>th</sup> May to 7am Monday 7<sup>th</sup> May**

Saru Crossing requires permanent upgrade of the approaches which will ensure that the crossing is immediately accessible after flood events.

Motorists are requested to plan their travel accordingly and use available alternative access through Natabua Road. We apologise for the expected inconvenience. For further queries please call FRA on 5720.





*Photo Caption: Saru Bridge in Lautoka*