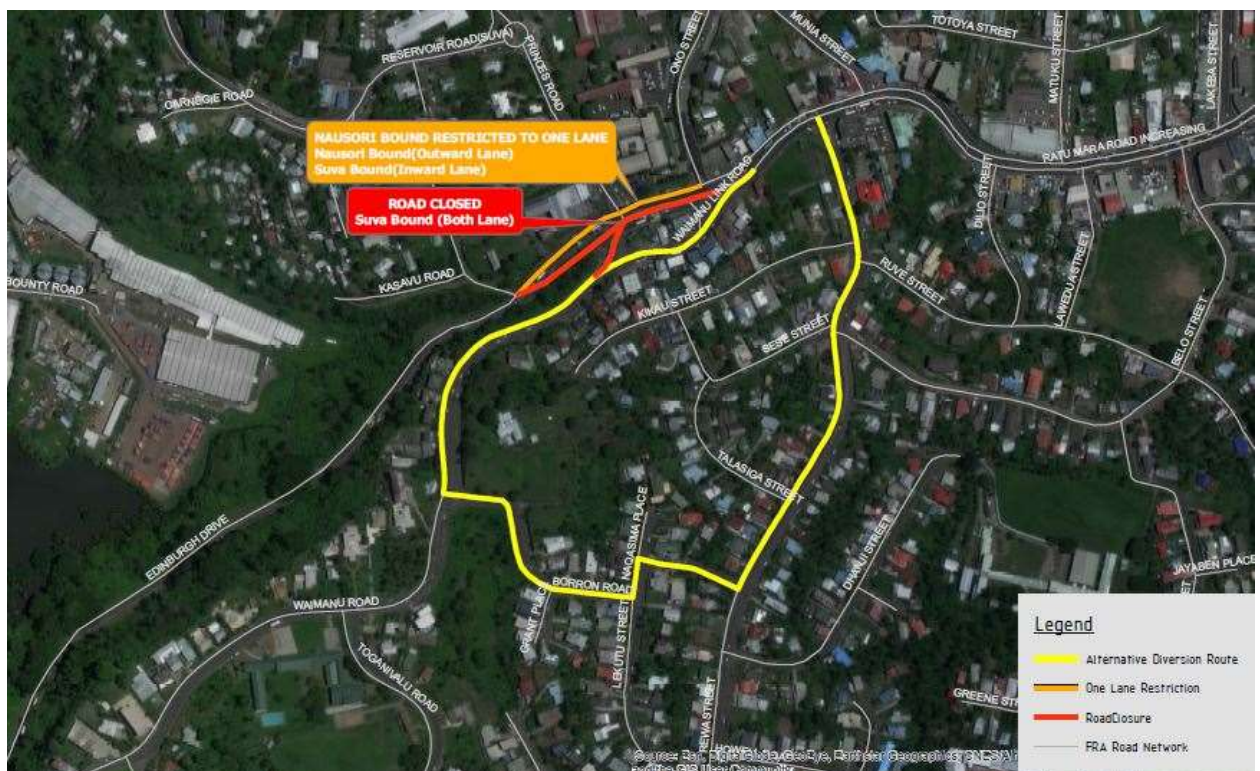


PUBLIC ADVISORY

SUVA ARTERIAL ROAD UPGRADING PROJECT (SARUP 1)

Under the on-going Suva Arterial Roads Upgrade Project (SARUP 1) the Waimanu Road Intersection along Ratu Mara Road will be closed during this weekend. Details are as follows:

Waimanu Intersection together with both Suva bound lanes will be closed on **Saturday, 12th May 2018 from 6pm till 7am Sunday, 13th May**. This closure is to complete the final layer of surfacing works. Motorist are advised to use the detour routes to get access from Waimanu Road onto Ratu Mara Road and vice versa, which is Borrion Road onto Rewa Street onto Ratu Mara Road.



We apologise for the expected inconvenience. For further queries please call FRA on 5720.