

# PUBLIC ADVISORY

---

## ROAD CLOSURE NOTICE

**WEDNESDAY, 20TH DECEMBER TO SATURDAY, 27TH JANUARY 2018**

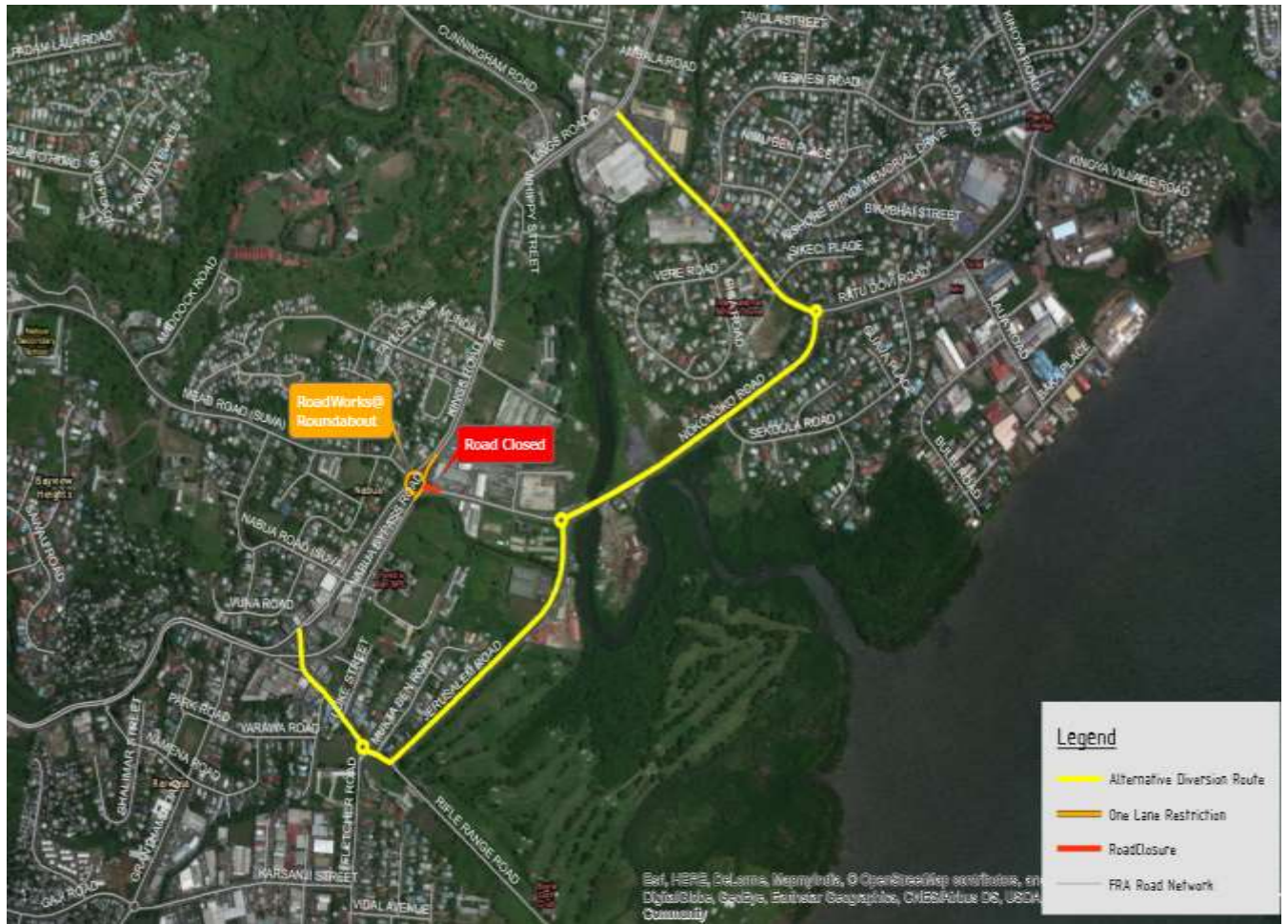
As part of Suva Arterial Road Upgrade Project (SARUP 01), phase three of Nabua/ Mead Road Roundabout upgrades to concrete pavement will commence from 20<sup>th</sup> December. The permanent pavement work is scheduled as follows:

### **NABUA ROUNDABOUT – CLOSURE OF GOLF LINK ROAD FROM ROUND ABOUT TO NIVIS MOTORS DRIVEWAY**

Public are advised to take heed of the ROAD CLOSURE of GOLF LINK ROAD from Nabua Roundabout up to NIVIS Motors driveway from Wednesday, 20<sup>th</sup> December to Saturday, 20<sup>th</sup> January 2018.

Motorist are advised to use Ratu Dovi Road (Centre Point) and Jerusalem Road as detour options to access onto Ratu Dovi Road and to Ratu Mara Road.

Our contractor China Railway Fifth Group will work to keep disruptions to a minimum and we ask the public for their patience during these important works. Travelers along this area are advised to take this notice into account when finalising travel plans. We apologise for the expected inconvenience. **For further queries please call FRA on 5720.**



**Jonathan Moore**

**Chief Executive Officer**